

# Home Teams

Gail Robertson

Home Team Lead

Dumfries and Galloway Health and Social Care Partnership

Gail.robertson2@nhs.scot

09/02/2022



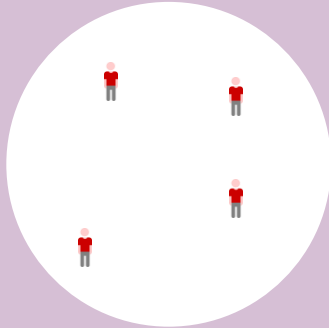
# Dumfries and Galloway

- Approximately 148,000 people live in Dumfries and Galloway
- 3rd most sparsely populated mainland region of Scotland

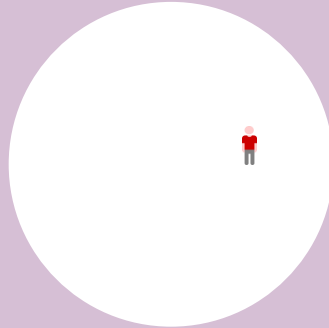
**POPULATION DENSITY:** number of people per hectare



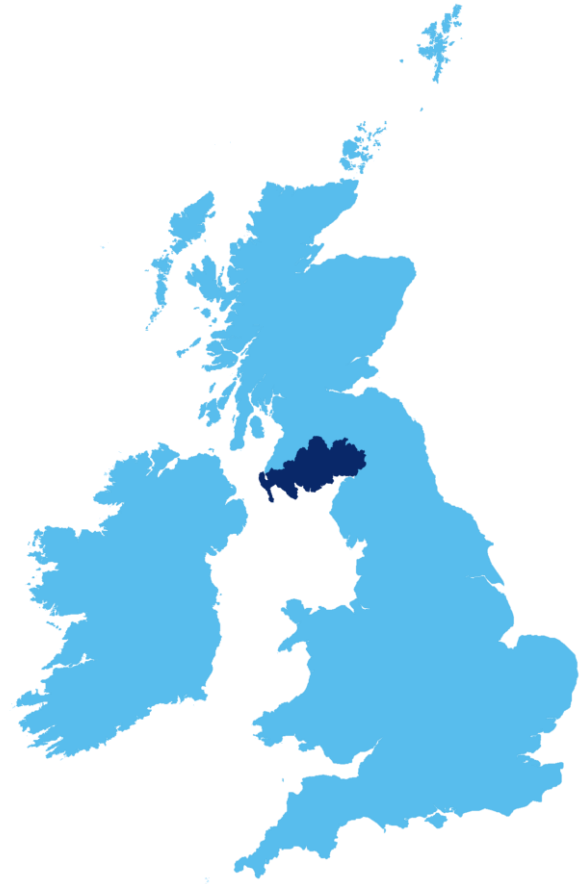
Glasgow City: **33**



Scotland average: **0.7**

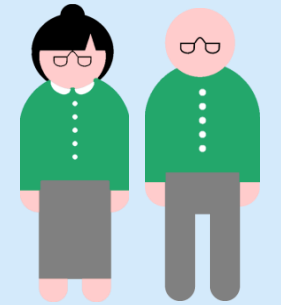
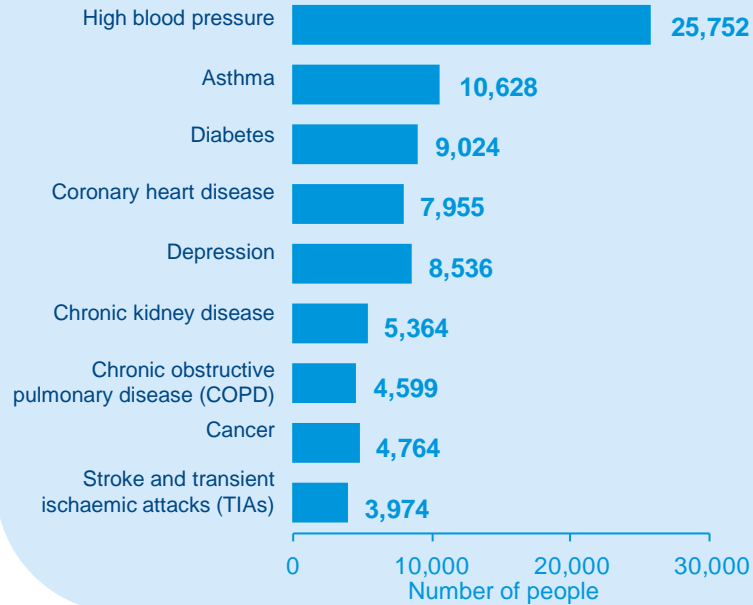


Dumfries and Galloway: **0.2**



- Approximately 1 in 3 adults (32%) have at least 1 long term condition

### LONG-TERM CONDITIONS: number of people with existing long-term conditions



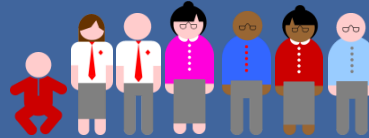
**12,567**

People have 2 or more long term conditions

- The gap between younger and older populations is widening over time.
- The number of people aged 85 and over is expected to more than double over the next 15 years

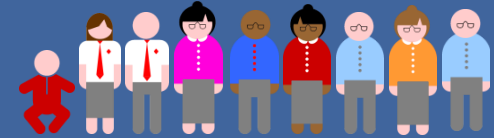
## POPULATION CHANGES: dependency ratio

**2014**  
For every 10 working age people there were...



**7**  
non-working people

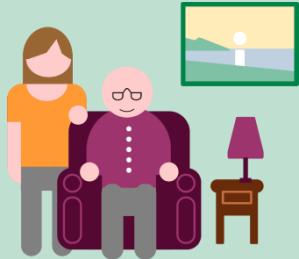
**2039**  
For every 10 working age people there will be...



**9**  
non-working people

Source: National Records of Scotland (NRS)

## CARERS: number of people who provide unpaid care and support



**14,995**

Carers in Dumfries and Galloway

**4,336** (29%)  
of Carers  
provide over  
50 hours of  
support per  
week

**616** (14.5%)  
are in bad or  
very bad  
health

Source: Scotland's Census 2011

- Approximately 1 in 10 people provided unpaid care and support to family, friends or neighbours

# Why Home Teams?

- System pressures within health and social care
- Increasing numbers of delayed discharges
- Backlog of elective waiting lists which continue to increase
- Lack of care and support provision within our communities
- Challenges with recruitment and retention within Dumfries and Galloway
- The need to create an integrated, flexible workforce
- To harness new opportunities with technology and equipment
- To support people to take more responsibility for their own health and encourage a strength based asset approach

# What is the vision for Home Teams?

- Home Teams will be fully integrated teams placed at the heart of the community
- To work closely with people and their family, friends, the wider local community and services to enable people to live healthy and active lives and live at home for longer
- To support people within their community to live at home, close to home or in a homely care setting, preventing a hospital admission where appropriate, or safely bringing them home from hospital earlier. A 'Home First' approach is the default position for everyone
- To ensure people are at the heart of any decisions and are encouraged to improve and maintain their health and wellbeing through good conversations

# Integrated Home Team – Core members

- Public Health Improvement
- Social Worker
- Care Coordinator
- Nurse
- Healthcare Support Workers / Support Workers
- Physiotherapist
- Occupational Therapist
- Patient Flow Co-ordinators
- Business Support

# How do we achieve Home Teams?

- Strong Leadership
- Shared vision by the Partnership
- Project Team
- Agreed governance structure
- Communication and Engagement Plan
- Workforce Delivery Group
- Organisational Development and Learning
- IT and Systems
- Workstreams



# Challenges

- System pressures
- Different IT systems across the Partnership
- Different terms and conditions across the Partnership
- Provision of care and support at home
- Recruitment and retention within Dumfries and Galloway
- Communication “is everyone hearing the message”?
- Cultural change

# Where are we now

- Home Team Service Manager
- Team Leads
- Working with the teams and wider stakeholders in the workstreams
- Commenced engagement and communication sessions with workforce and community
- IT systems
- Moving the workforce into relevant home teams
- Evaluation

Thank you