

SOCIAL PRESCRIBING NETWORK PROJECT ECHO NORTHERN IRELAND

PROJECT ECHO

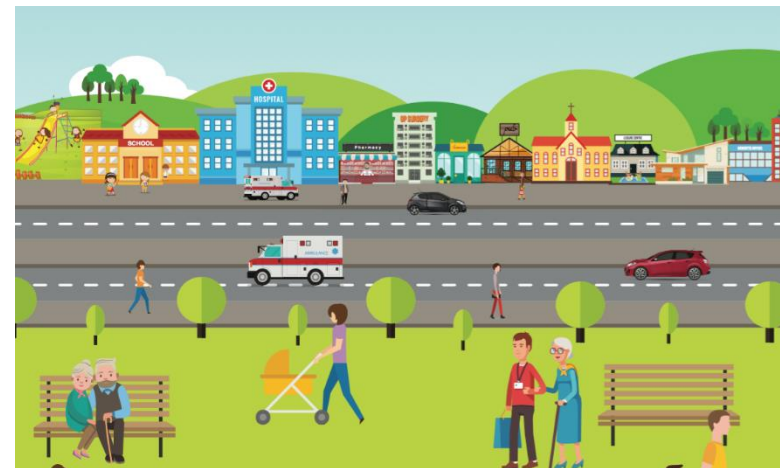


- Developed in New Mexico - Project ECHO® (Extension of Community Healthcare Outcomes) is a pioneering telementoring programme.
- Provides an evidence based model for education, training, sharing best practice, co-creating new service delivery models and supporting more integrated working for people within Health & Social Care and beyond.
- Improves quality of care for patients and supports the learning and wellbeing of health and social care providers.
- Encourages true collaborative working and can provide the scaffolding and governance to facilitate new ways of working
- The Health and Social Care Board (HSCB) is working in partnership with Hospice UK to facilitate the delivery of Project ECHO NI across 30 ECHO networks

SOCIAL PRESCRIBING



- Social Prescribing is a means of enabling GPs and other frontline healthcare professionals to refer people to a link worker within their local community
- Design their own personalised solutions, i.e. ‘co-produce’ their ‘social prescription’- so that people with social, emotional or practical needs are empowered to find solutions which will improve their health and wellbeing,
- Often using services provided by the voluntary and community sector.
- It is an innovative and growing movement, with the potential to reduce the financial burden on the NHS and particularly on primary care.



B	I	N	G	O
Strategic & Joined up Leadership across Government Departments		Learning Network & Supporting Framework in place for the SP Workforce		Sustainable Investment in the Third Sector
Clarity on the Concept & Commonality of Language		Common Evaluation Framework and strong links with researchers and universities	Long-term Commissioned Approach	Simple Referral Processes
Make Best Use of e- Health and Digital Opportunities		Agreement on High Level principles for social prescribing in NI		Keep it Local



Since October 2019, the Social Prescribing ECHO network has held monthly learning sessions and has included link workers from the range of social prescribing services in place across NI including;

- SPRING Social prescribing
 - mPower
- IMPACT Agewell – Mid and East Antrim
 - Connected Community Care
 - Living Well Moyle
- Caring Communities – Safe and Well

Aims -

- To facilitate shared learning of social prescribers
- Peer support and how to address the challenges in the role
- Promotes staff wellbeing and resilience;
- To develop a collaborative approach to social prescribing across sectors;
- To use this network to influence Regional Strategy , HSCB have recently led on the establishment of a Regional Social Prescribing Development Board.



MODEL



- Hub and spoke model, collaboration across sectors – shared vision
- Led by link workers - set curriculum relevant to their practice for last 3 years
- Inclusive model, removes barriers so social prescribers across NI can be involved
- Case sharing approach (peer discussion) – supportive framework. Staff are supported in their role and there is a shared understanding of good practice
- Enthusiasm and high levels of engagement from of all participants
- Exceptional support from Project ECHO team
- This Community of Practice shared new ways of working during C-19 and provided support to each other in highly challenging times.

Social Prescribing ECHO Network

- Background & Aim: To facilitate shared learning of social prescribing to include what works well, and how to address the challenges and to further develop the peer support network which promotes staff well-being and resilience.
- To develop a collaborative approach to social prescribing across sectors.
- To use this network to influence Regional Strategy



7 ECHO sessions



43 Average Participants



16 Education Presentations

Evaluation findings



75% Agreed that they have applied knowledge gained through the ECHO network & applied it their practice.



70% of participants have attended 5-7 ECHO Sessions.



95% of participants agreed the topics delivered where relevant to their role.



77% agreed that Case Studies where the most useful aspect of ECHO followed by the Education Presentations.



79% of participants agreed they have shared ECHO learning with other members of staff or service.



68% of participants Agreed or Strongly Agreed that participation in ECHO helped them feel more supported in their role.



90% would recommend ECHO as a useful learning tool to others.



88% of participants would like to participate in this Network again.



53% agreed that their preferred way for ECHO to connect with the Social Prescribing Programme Board was for co-chairs to attend ECHO regularly.



95% agreed that participation in ECHO had increased their knowledge of service initiatives across other service.

Feedback

"Highly professional & extremely useful experience

"its certainly positive- the shared learning was a fantastic way of broadening knowledge and insight into many different areas

QUESTIONS

